

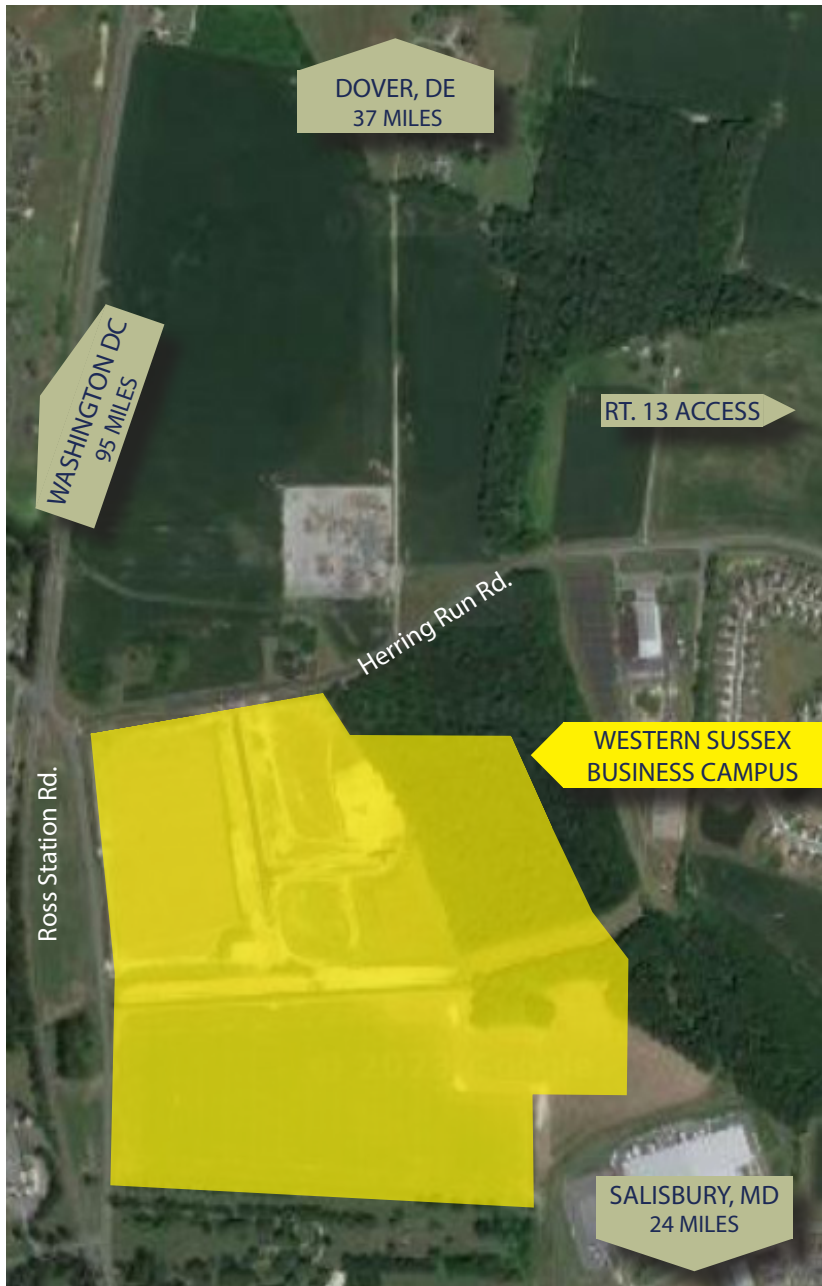
FOR LEASE



WWW.KRM-DEV.COM

WESTERN SUSSEX BUSINESS CAMPUS
SEAFORD, DE

WESTERN SUSSEX BUSINESS CAMPUS SEAFORD, DE



ZONING

M-1

LIGHT INDUSTRIAL

LAND

45

ACRES

BUSINESS CAMPUS HIGHLIGHTS

- Convenient Delaware Location
- Entrance off Herring Run Rd- access to RTE 13
- Various Lot Sizes Available for Build-To-Suit
- Zoned Light Industrial Business Park
- Professional Campus Design
- Leasing & Sale Opportunities

The Regional Leader In Quality Business Space!



FOR INFORMATION ABOUT LEASING CONTACT: JESSE PARKS • KRM PRESIDENT • JPARKS@KRM-DEV.COM
205 CANNON STREET SUITE 1 • CHESTERTOWN, MD 21620 • 410.810.1574 • WWW.KRM-DEV.COM